



1135 Lance Road • Norfolk, VA 23502-2429  
a.k.a. Universal Air Precipitator Corporation  
Quality Equipment and Service Since 1962

Telephone: 757-461-0077  
Telefax: 757-461-0808  
email: info@uapc.com

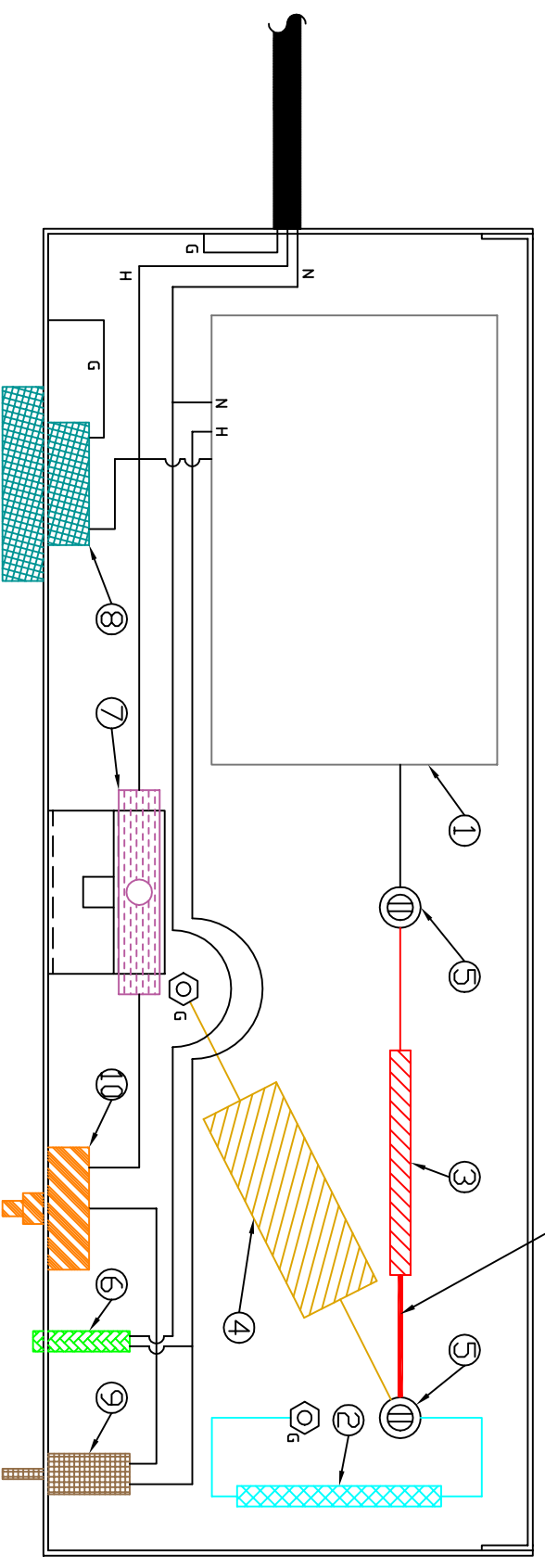
### COLLECTING CELL PRECIPITATOR TECHNICAL DATA

1. <b>Weight &amp; Dimensions:</b>	Capacity		
	800 cfm	1000 cfm	1200 cfm
Weight, lbs	26	32	37
Height, inches	18	18	18
Width, inches	17-1/8	21-1/4	24-3/4
Depth (Direction of Air Flow)	12-9/16	12-9/16	12-9/16
<b>2. Ionizing Section</b>			
Ionizing Wire Quantity (0.007" dia)	10	13	15
<b>3. Collection Section</b>			
Ground Collector Plates:			
Quantity	21	27	32
Surface Area, Sq. In.	7612 (53 sq. ft.)	9688 (67 sq. ft.)	11,418 (79 sq. ft.)
High Voltage Plates:			
Quantity	22	28	33
Surface Area, Sq. In.	6949	8824	10,316
<b>4. General:</b>			
Ionizer: The ionizing section is an integral part of the collecting cell. It is supported without insulators.			
Normal Operating Volts.....	8000 VDC		
Voltage Range.....	7000 to 8800 VDC		
Voltage Gradient at 8000 VDC.....	11,158 VDC		
Collection Section: Assembled with individual spacers			
Normal Operating Volts.....	8000 VDC		
Voltage Range.....	7000 to 8800 VDC		
Voltage Gradient at 8000 VDC.....	24,768 VDC		
Plate Spacing.....	0.323 inches		
Insulators.....	2-1/4" Dia. Glazed Ceramic		
Efficiency.....	91% Atmospheric, 96% DOP		
Test Method.....	ASHRAE 52-76		



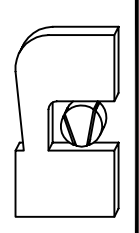
REVISIONS				
ZONE	REV	DESCRIPTION	DATE	APPROVED

Note: The Darker End of the Drawn Rectifier Represents the Painted End of the Rectifier



ITEM	QTY	UAPC #	DESCRIPTION
hw	4	01100206	#6 Internal Tooth Lock Washer
HW	4	01100228	#6 Hex Nut
HW	10	01100207	#8 Internal Tooth Lock Washer
HW	6	01100229	#8 Hex Nut
HW	6	01100031	8-32 X 5/16" Brass Rd Hd Machine Screw
10	1	VARIES	Rheostat/Powerstat
9	1	VARIES	Circuit Breaker
8	1	VARIES	Meter
7	1	01670002	Safety Switch
6	1	01370001	Light, Green LED
5	2	01680033	Insulator, 1/2"Ø X 1"
4	1	03680038	Capacitor
3	1	03680002	Rectifier
2	1	03680001	Bleeder Resistor
1	1	03630001	Transformer, 110V Primary/8000V Secondary

H-HDT  
N-NEUTRAL  
G-GROUND



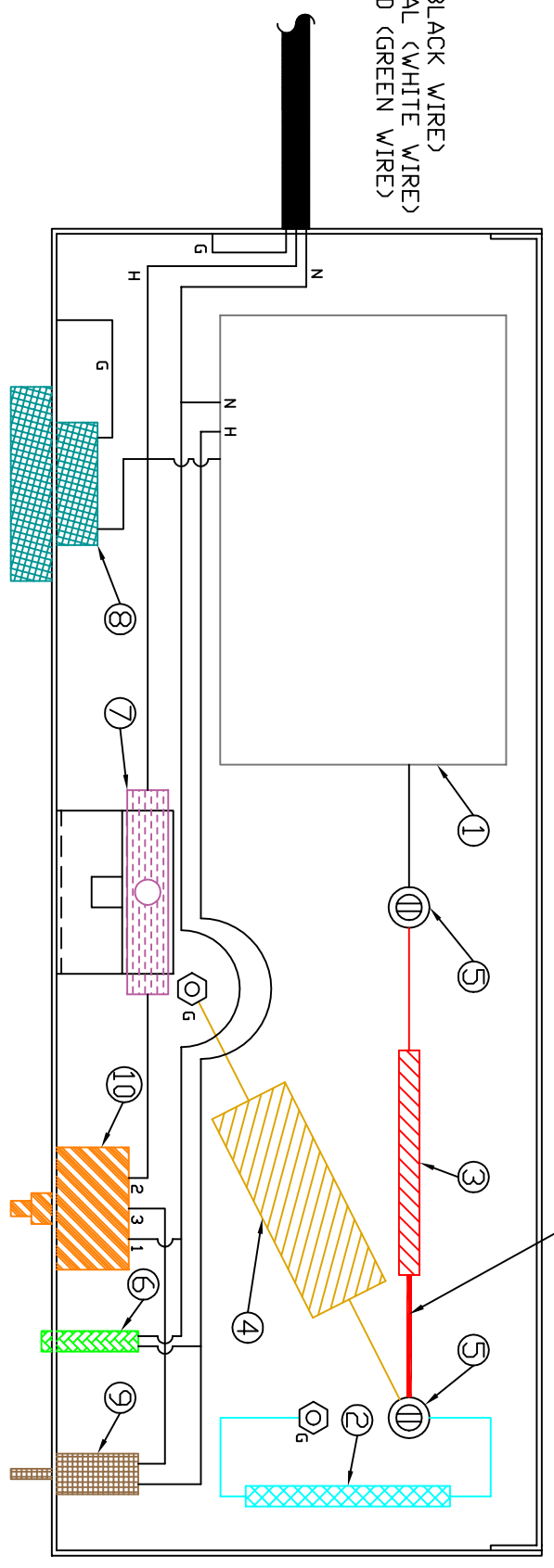
**UNIVERSAL AIR PRODUCTS**  
1135 Lance Road, Norfolk VA 23502  
Layout View, Power Pack  
Commercial/Industrial Units

Drawn By: dwj	SIZE B	FSCM NO.	DWG NO. 02760057	REV 0
Approved By: -	Scale 2:3	Date 11/11/98	Sheet 1 of 1	

REVISIONS				
ZONE	REV	DESCRIPTION	DATE	APPROVED

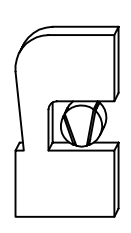
Note: The Darker End of the Drawn Rectifier Represents the Painted End of the Rectifier

H-HOT (BLACK WIRE)  
 N-NEUTRAL (WHITE WIRE)  
 G-GROUND (GREEN WIRE)



NOTE: Powerstat (Item #10) should be used for:  
 50 Hz-All cases  
 60 Hz-If more than 3000cfm per pack, or if supply voltage fluctuates more than +/- 5%.

ITEM	QTY	UAPC #	DESCRIPTION
hw	4	01100206	#6 Internal Tooth Lock Washer
HW	4	01100228	#6 Hex Nut
HW	10	01100207	#8 Internal Tooth Lock Washer
HW	6	01100229	#8 Hex Nut
HW	6	01100031	8-32 X 5/16" Brass Rd Hd Machine Screw
10	1	VARIES	Powerstat (50/60HZ), not shown in scale
9	1	VARIES	Circuit Breaker
8	1	VARIES	Meter
7	1	01670002	Safety Switch
6	1	01370001	Light, Green LED
5	2	01680033	Insulator, 1/2"Ø X 1"
4	1	03680038	Capacitor
3	1	03680002	Rectifier
2	1	03680001	Bleeder Resistor
1	1	03630001	Transformer, 110V Primary/8000V Secondary



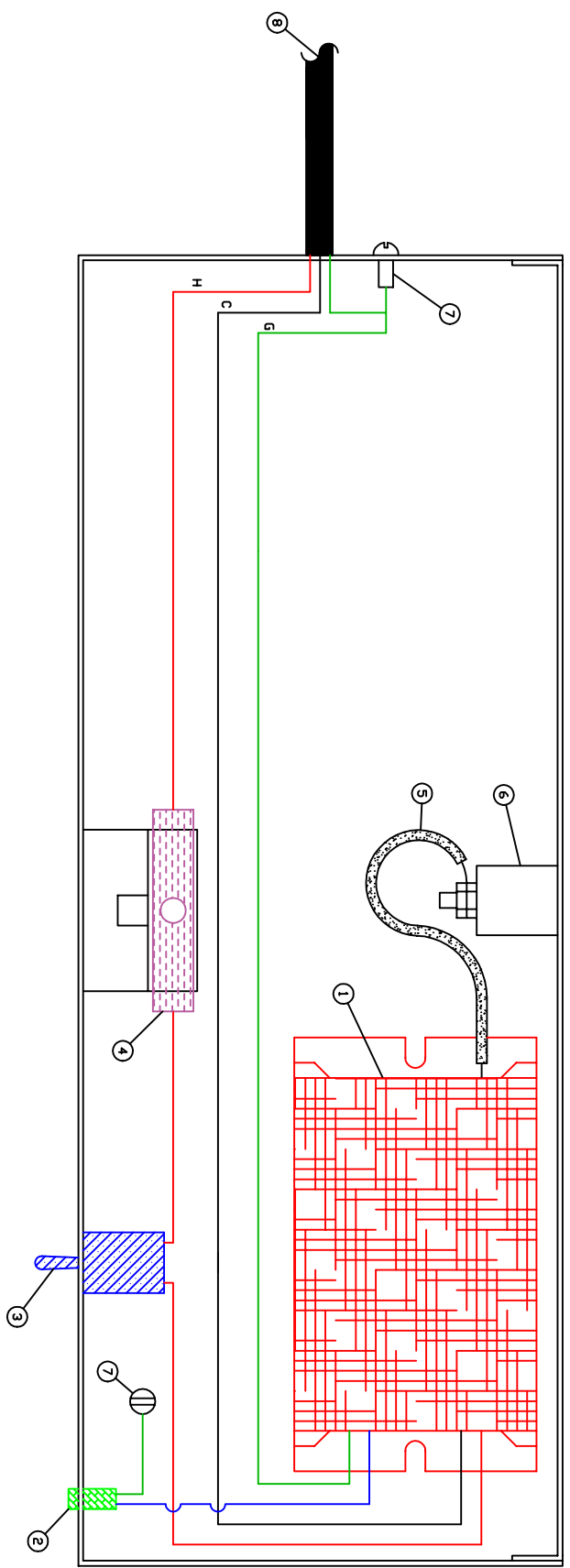
**UNIVERSAL AIR PRODUCTS**  
 1135 Lance Road, Norfolk VA 23502

Layout View, Power Pack  
 Commercial/Industrial Units /w Powerstat

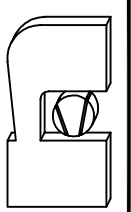
Drawn By: dwj	SIZE: B	FSCM NO.:	DWG NO.:	REV: 0
Approved By: -	Scale: 2:3	Date: 11/11/98	Sheet: 1 of 1	



REVISIONS				
ZONE	REV	DESCRIPTION	Date	APPROVED



8	1	01660027	Power Supply Cord, 110volt
7	1		Ground Connection
6	1	01680039	Insulator, Door Bushing
5	1	03660029	High Voltage Connection Wire
4	1	01670002	Safety Switch
3	1	01670014	Selector Switch, Dff - Dn
2	1	01370044	Light, Green LED
1	1	01630032	Power Supply, UL 867, 110V P/7000-8000V S
ITEM	QTY	UAPC #	DESCRIPTION



Drawn By:	pmb	SIZE	B
Approved By:	-	FSQM NO.	
		DWG NO.	02760118
		Scale	2:3
		Date	9/12/02
		Sheet	1 of 1
<b>UNIVERSAL AIR PRODUCTS</b> 1135 Lance Road, Norfolk VA 23502 Layout View, UL 867 Power Pack Commercial/Industrial Units			
			REV A